

PORTFOLIO

2018 SELECTED WORKS

f a n k
p e t r i s a n o

TABLE OF CONTENTS

INCLUSIVITY WITHOUT SPECIFICITY	4-9
RECONNECTING A SELFLESS URBAN LANDSCAPE	10-13
yourSPACE	14-17
LIVE + EAT	18-21
YESTOBEAUTY	22-25

whoisfp.com
647-309-1826
frank.petrisano@gmail.com

WORK

RHINO ADOBE DIGI. AUTO REVIT ARC
CC FAB. CAD GIS

p2i STRATEGIES. Project Coordinator. [Construction project management office, where I am responsible for project coordination, proposal writing, and in-house graphic design] *presently employed.*

AlfraDX. [Website & graphic design, business optimization solutions, UX/UI, Vector-based graphics, 3D modelling & printing,] *presently engaged.*

UNIVERSITY OF CALGARY. Research Assistant. [Urban research on public-private partnerships towards affordable housing] *summer 2017.*

URBAN PARADISE. Landscape Designer, Labourer. [Consultation, schematic design, implementation] *summer 2016.*

REMINGTON HOMES. Asst. Site Supervisor. [Documentation, scheduling, site safety] *summer 2015.*

UNIVERSITY OF CALGARY. Teaching Assistant. [Graduate level MSP G.I.S class - labs, marking] *2015 fall semester.*

ARTSCAPE TORONTO. Creative Placemaking Lab Intern. [Initialised crowd-sourced mapping platform] *2014 school year.*

SCHOOL

2018

2017 ■ **UNIVERSITY OF CALGARY.**
M.Arch. [3 year professional degree]

2016

2015 ■ **GEORGE BROWN COLLEGE.**
Certificate. [Revit]

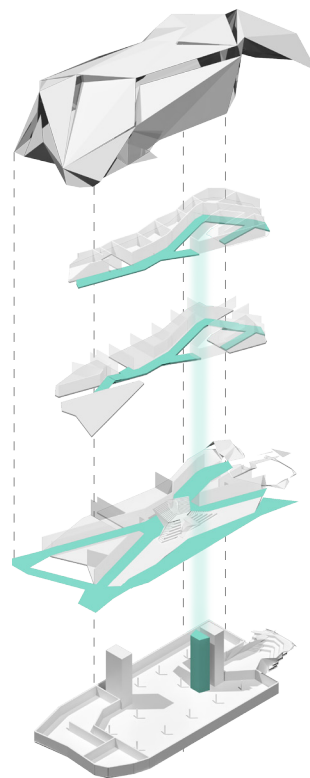
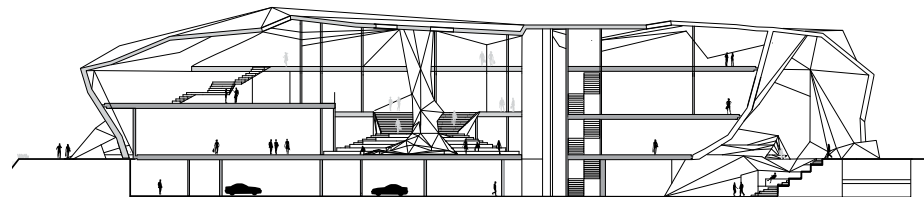
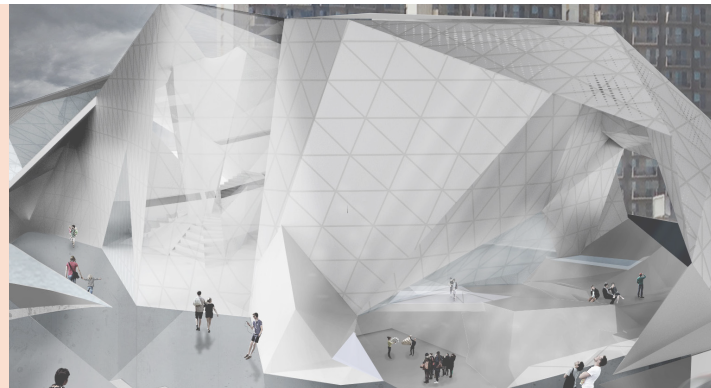
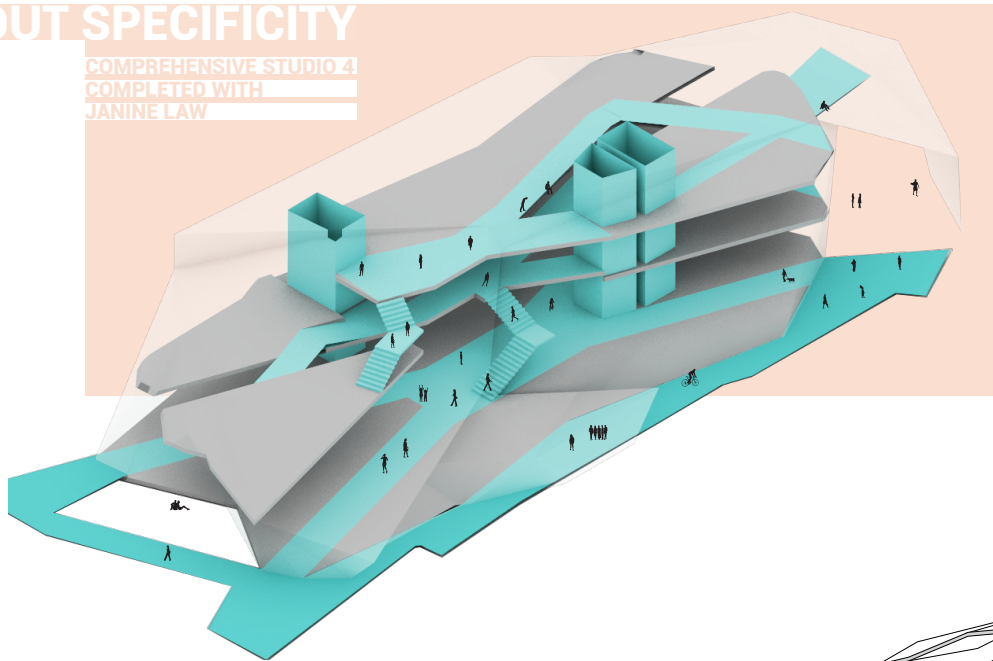
2014 ■ **UNIVERSITY OF TORONTO.**
B.A. [majors in Urban Studies, Env. Geo., , & a minor in G.I.S]

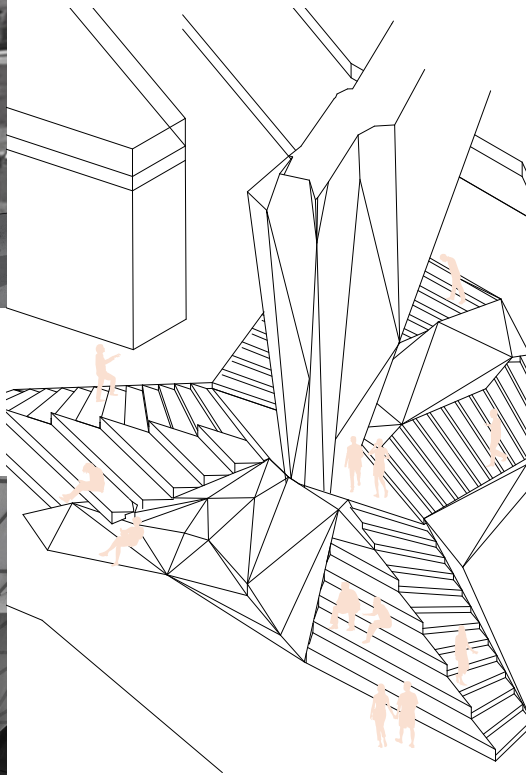
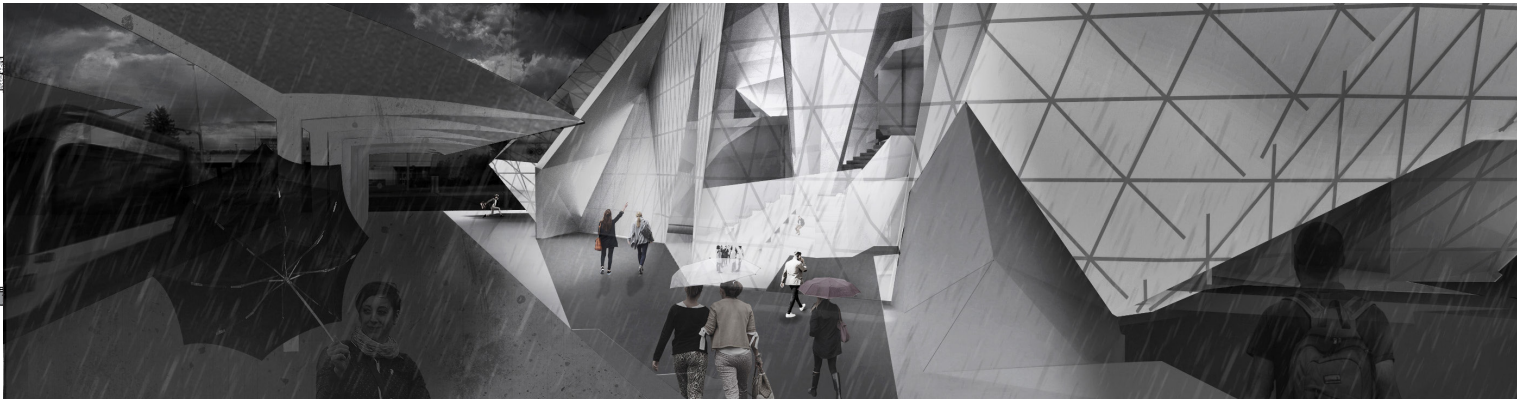
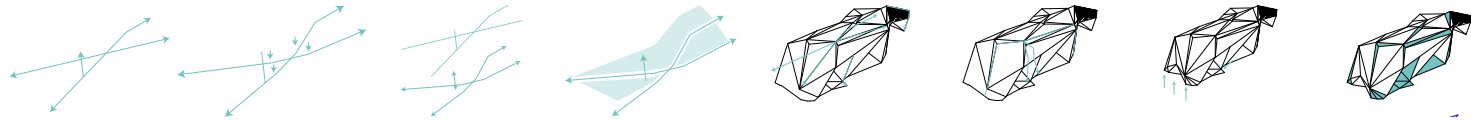
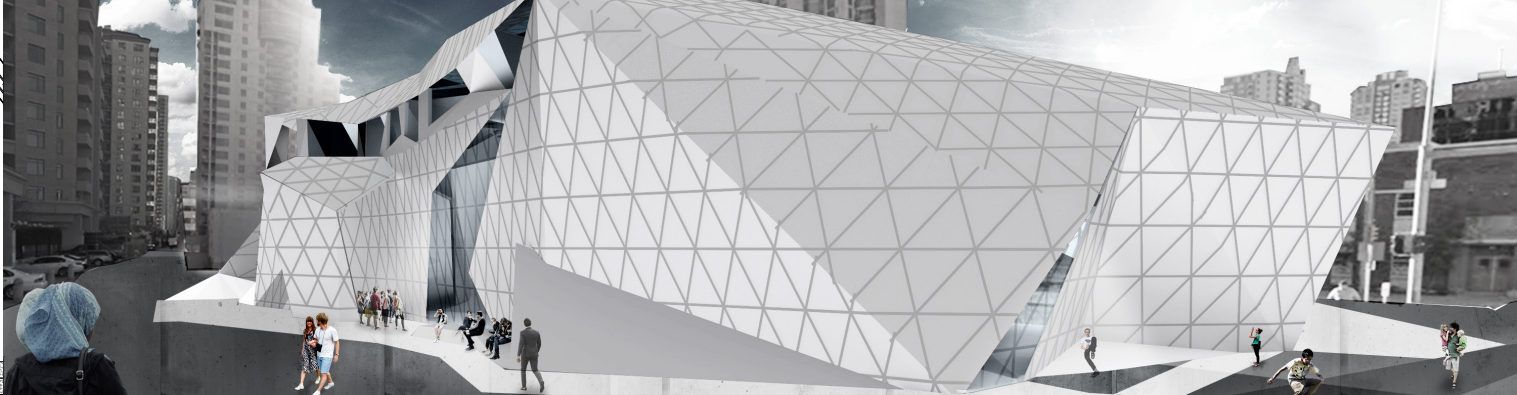
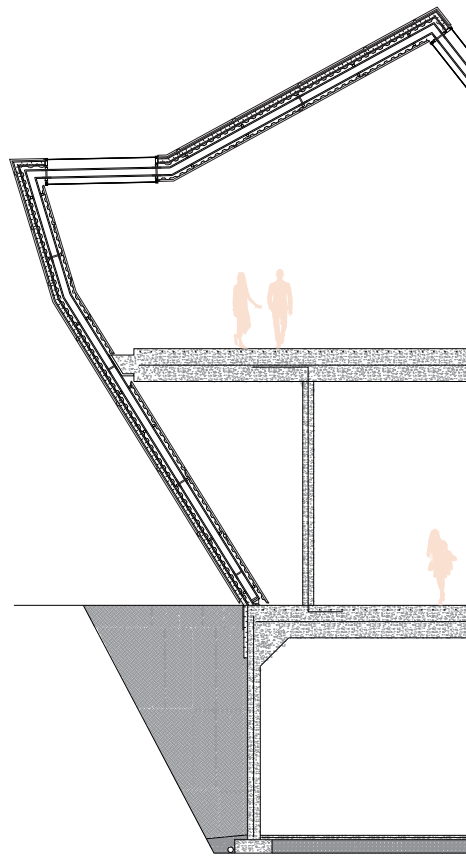
INCLUSIVITY WITHOUT SPECIFICITY

Our project positions itself within Calgary's existing design community as a place of idea exploration and conceptual development of architecturally related projects. It will be a home of interdisciplinary research that welcomes globally diverse teams on a short and long term basis focusing on systemic urban issues. The relationship that this exploration has with the public realm is twofold; it serves as a physical space that is dedicated to propagating research centred around systemic urban issues (finding future solutions) while being a physical example of a solution in its own capacity.

Access, choice, and shelter were used as the formal drivers of the design, chosen based on their universality and comprehensible nature. The point of this project was to explore the notion of a design that is inclusive enough to allow all of society to enter, but does not prescribe its users with specific ways of occupying the space.

COMPREHENSIVE STUDIO 4
COMPLETED WITH
JANINE LAW







RECONNECTING A SELFLESS URBAN LANDSCAPE

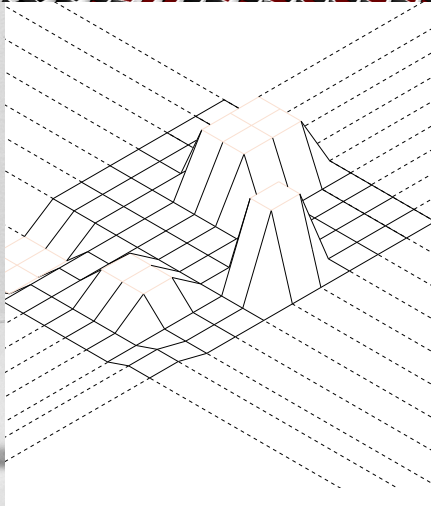
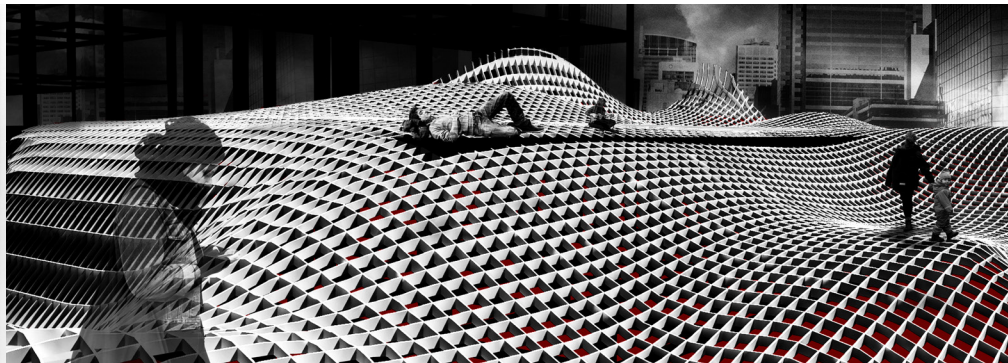
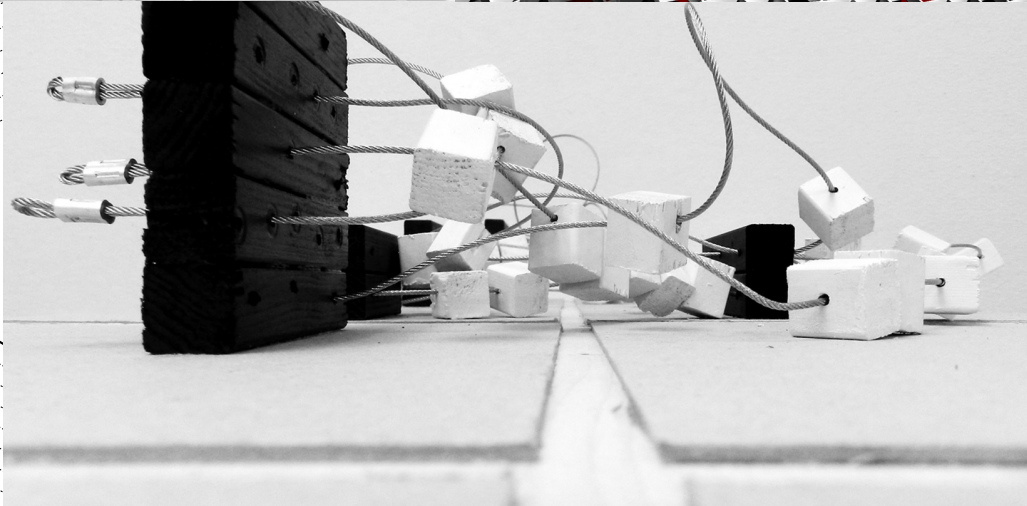
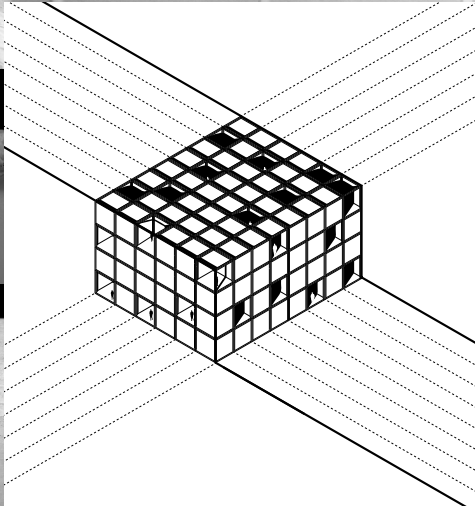
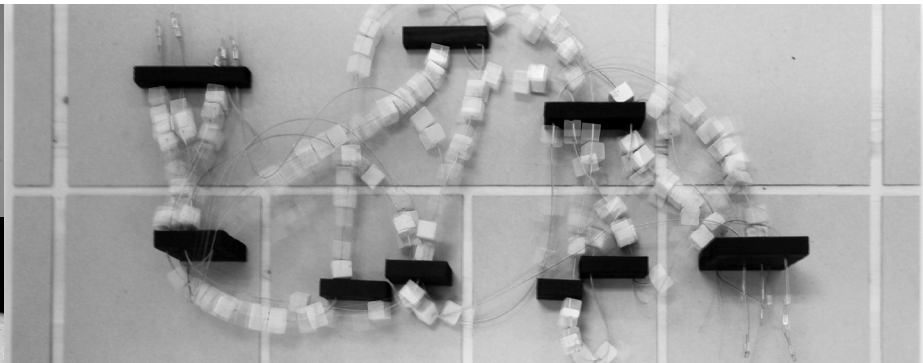
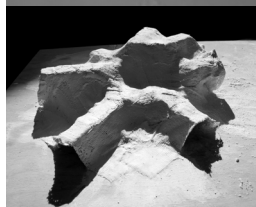
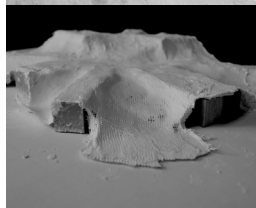
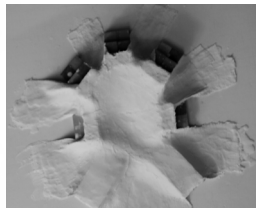
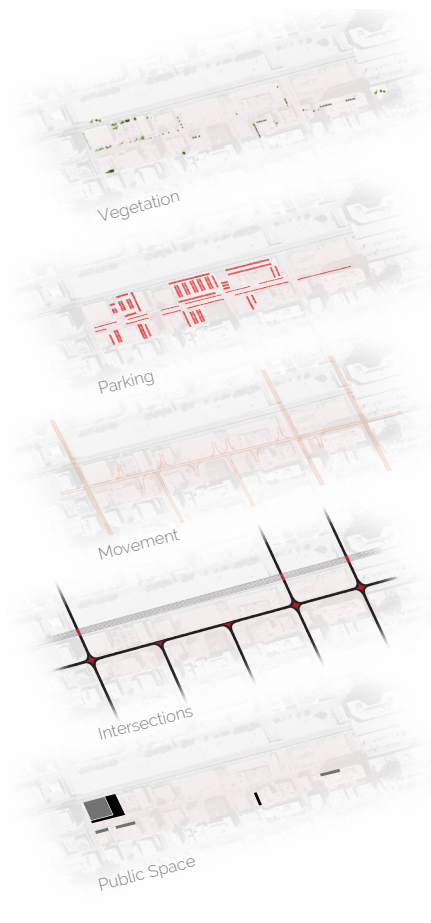
10th avenue SW between 8th street SW and 5th street SW has been selflessly sacrificing itself for the betterment of Calgary and Canada as a whole. Whether it was through the development of railway support infrastructure helping to facilitate the movements of goods across the country, or the interstitial space between downtown and southern Calgary aiding to the movement of people in and out of the city's core, 10th av. has never been a

street that lives for itself. The design intervention for this site positions the first selfish act of design the corridor has seen; a building that exemplifies the intersection between urban landscape and built form, created by flows and intensities inherent to the area.

A rigid, prefabricated grid is disrupted by a flowing and organic landscape to result in a building that is in constant tension between privacy and publicness.

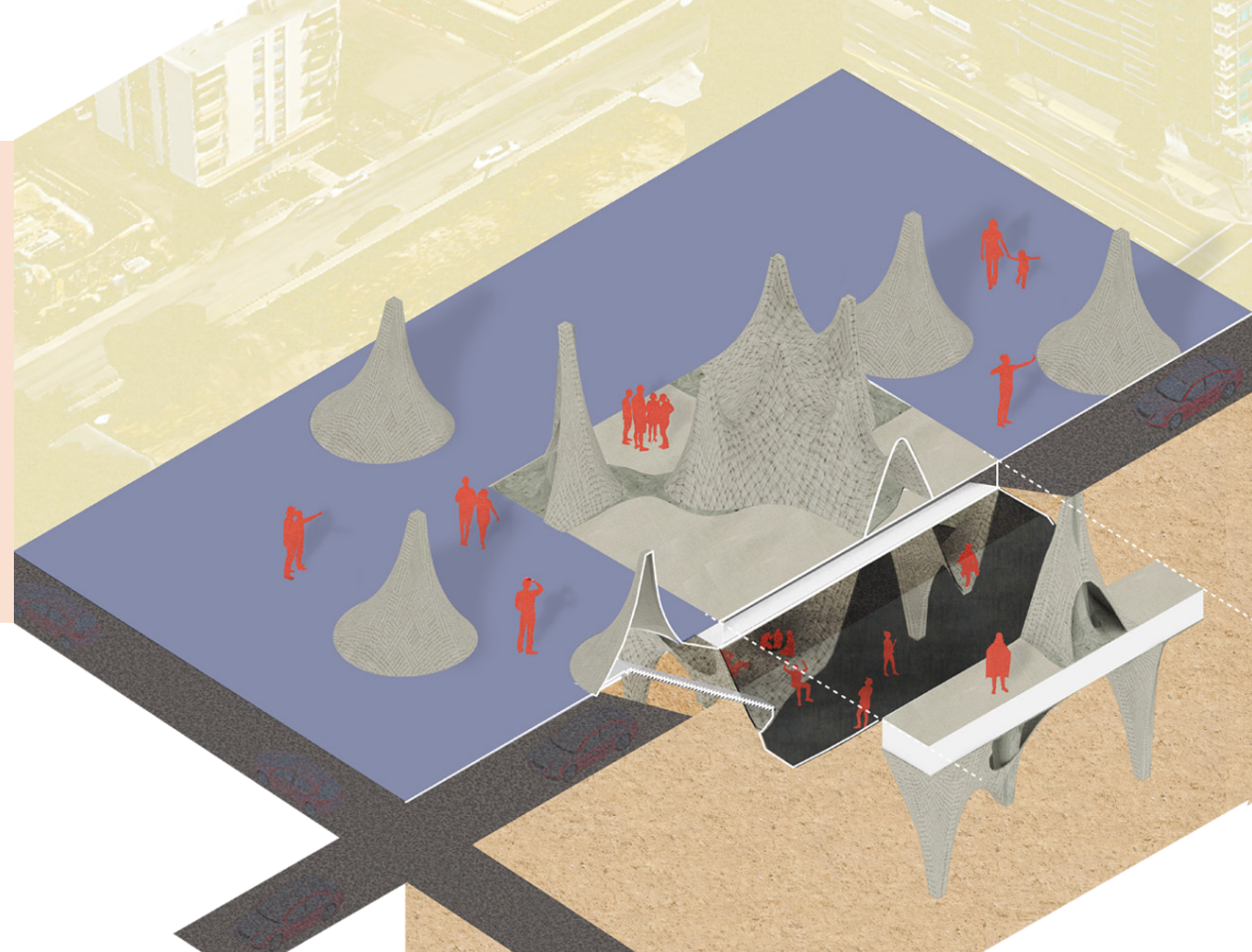
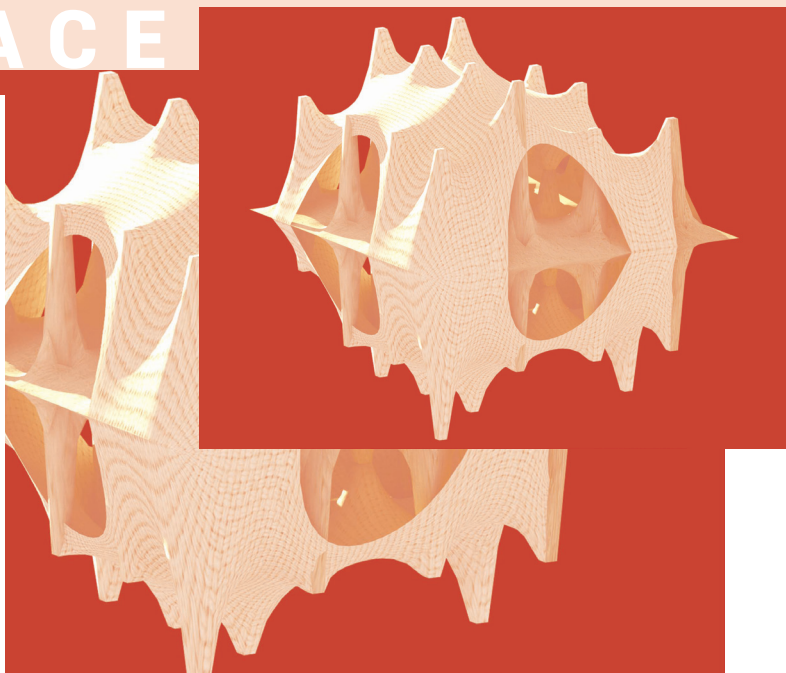
MIXED USE OFFICE +1
DESIGN STUDIO 3

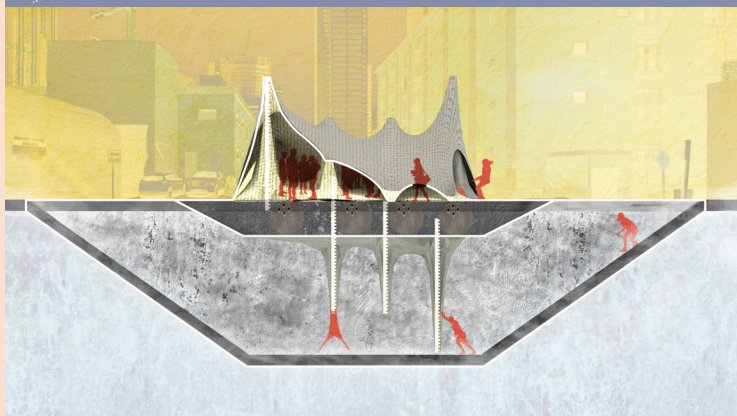
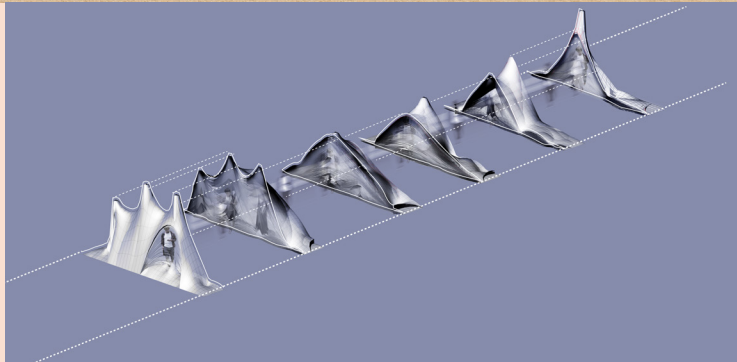
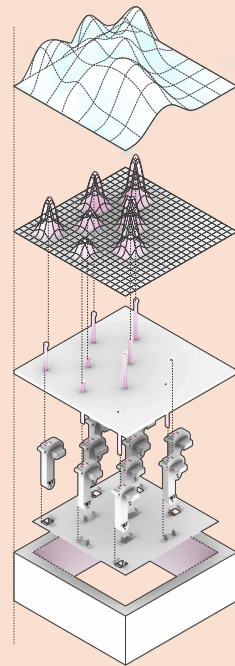
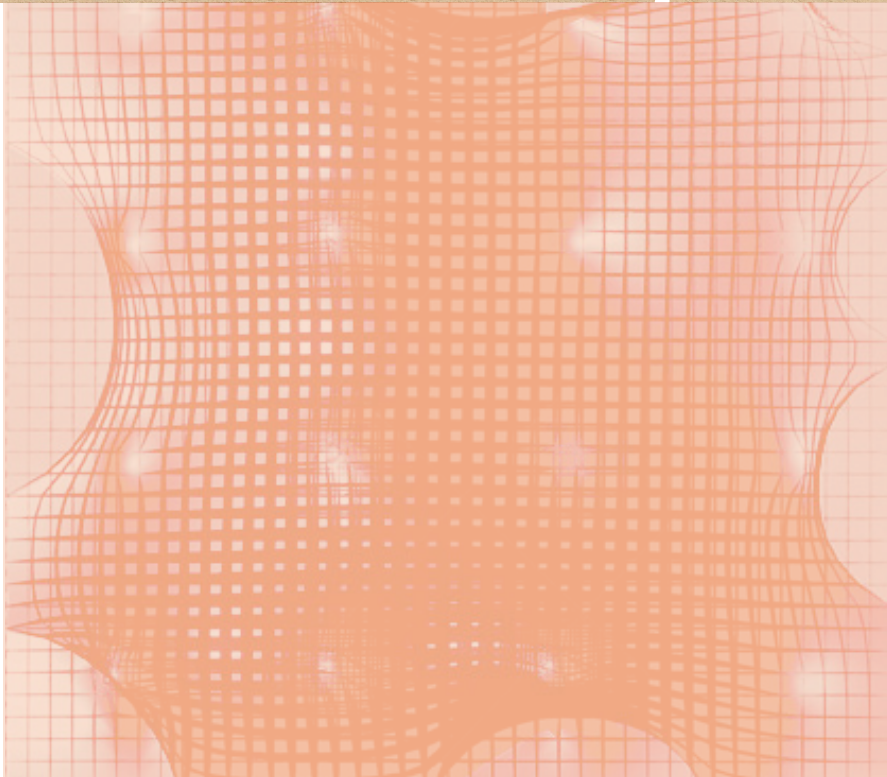
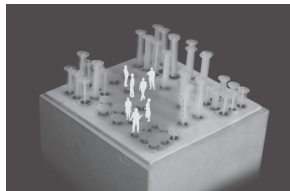




yourSPACE

Architecture has the power to divide. It separates the interior from the exterior, it can dictate user groups and therefore socially stratify, it delineates between rooms and functions, and it also causes an emotive response which divides based on subjectivity. But, what if it encouraged congregation? What if it responded to it? These questions serve as the initial pursuits into the investigation of an architectural intervention which is dependent on social stimulation. An undulating plane that changes its shape based on user interaction (both in terms of interaction with the surface, but also with one another), encouraging or discouraging congregation throughout its entirety. The plane can operate as a surface in-itself, but also has the ability to stretch and be manipulated to create space underneath.



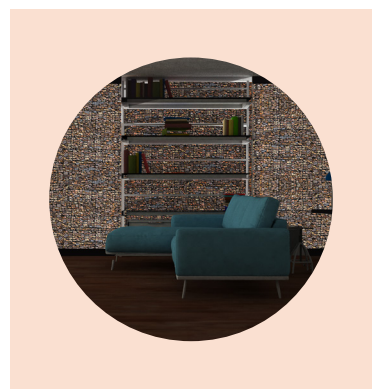
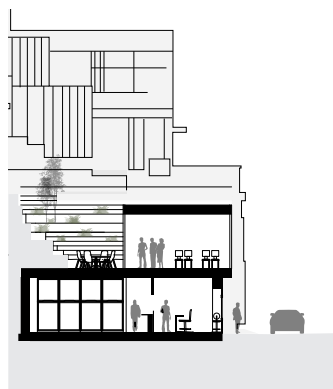
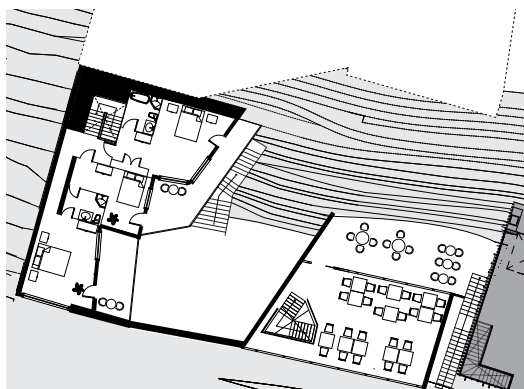
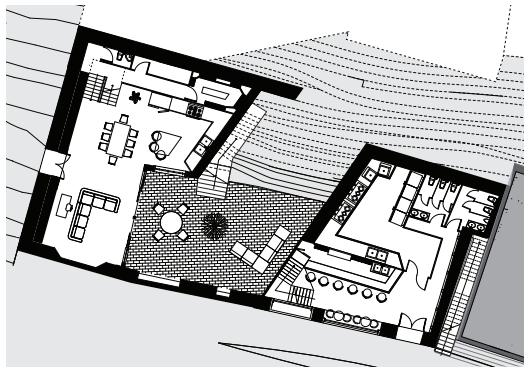
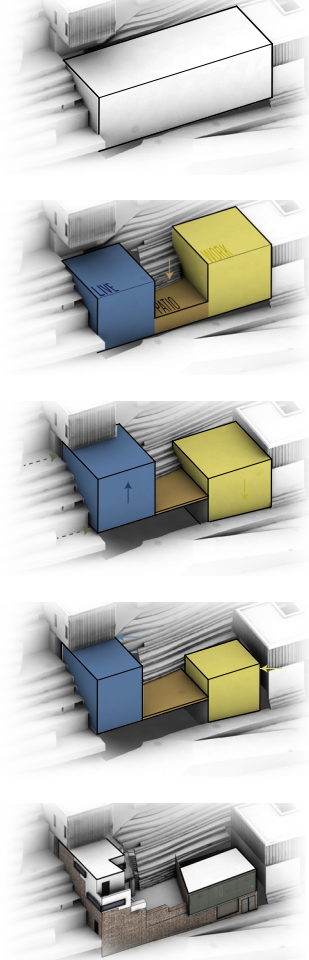


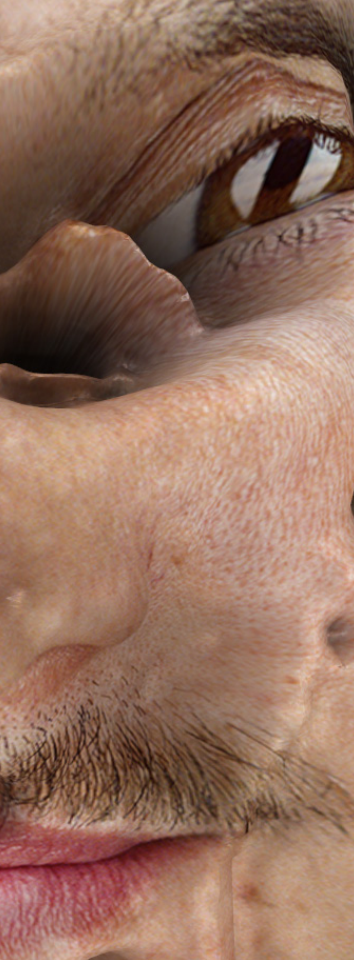
LIVE + EAT PATIO HOUSE, BARCELONA

Completed in Barcelona, under the guidance of architects with a different philosophy on the role a building should have in terms of its interface with the public realm, this project serves as an anomaly within the lineage of my typical research focus. The project is a 'patio house' that is one part of a larger block of tourism-focused development around a central tea field. The concept was to create an experience-based community of buildings that would foster a similar type of environment to

those found in popular wine country economies in California or Niagara Falls for example. The site features a three bedroom house with a focus on maximizing outdoor private space, as well as a restaurant which is physically segregated from the residential component. The separation between on-site programs as well as the street were the main driving factors to the design.







YESTOBEAUTY
ARCHITECTURE
AND ANONYMITY
GALLERY SHOW



